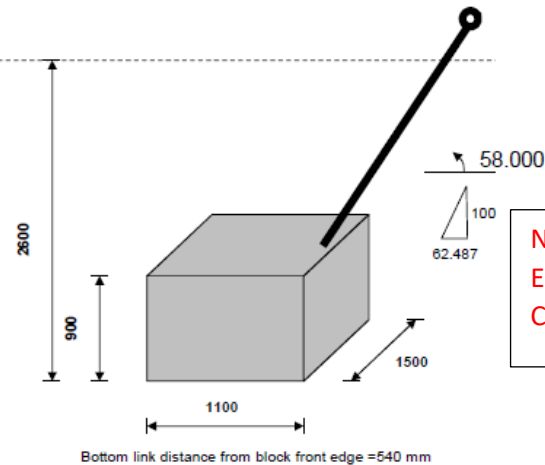


Dimensions (dashed line =NGL)



**N.B! THIS DRAWING IS AN EXAMPLE FOR QUANTITY ESTIMATES AND IS NOT TO BE USED FOR CONSTRUCTION.**

#### Bending Schedule

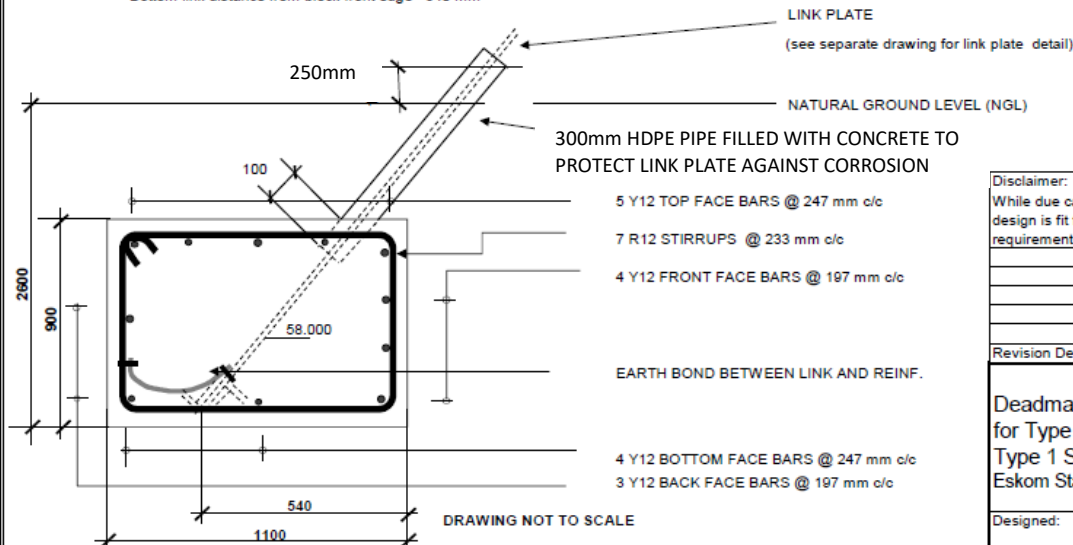
| Description   | Shape | Shape Code | No. Off | Dia mm | Length mm | Bend Dimensions |     |
|---------------|-------|------------|---------|--------|-----------|-----------------|-----|
| Top & Front   |       | 35         | 9       | Y12    | 1650      | 1400            |     |
| Bottom & Back |       | 35         | 7       | Y12    | 1650      | 1400            |     |
| Links         |       | 60         | 7       | R12    | 3750      | 788             | 988 |

#### Pricing Parameters

| Steel Weight (kg) | Concrete Volume (m³) | Excavation volume (m³) | Excavation s. area (m²) | Link plate & cleats (kg) | Factored Design Load (kN) |
|-------------------|----------------------|------------------------|-------------------------|--------------------------|---------------------------|
| 46.74             | 1.49                 | 4.29                   | 15.17                   | 110.30                   | 616.20                    |

Quantities are based on dimensions of design drawings  
Allowances have been made for material wastage or overbreak:  
Excavation sides: 0 mm  
Excavation bottom: 0 mm  
Note:

1. Diagrams are not to scale.
2. All design data and Construction to Specification TRM5CAAC 6 (240-47172520)
3. Concrete strength: 25MPa minimum at 28 days
4. This is a single cast foundation. No construction joints are allowed.
5. Link plate to be encased in concrete with min 50mm cover



#### Disclaimer:

While due care has been applied in the design of this foundation, the contractor is required to verify that this design is fit for purpose considering preferred construction methodologies, geotechnical and structural requirements required at the point of application.

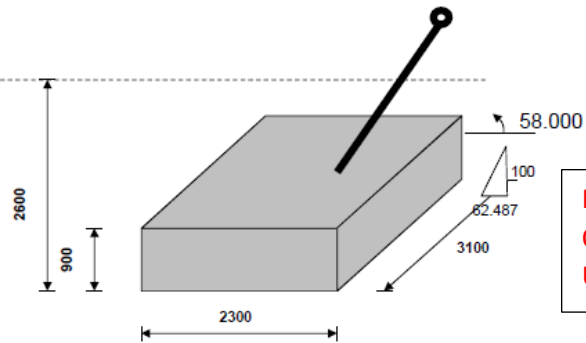
|  |  |  |  |
|--|--|--|--|
|  |  |  |  |
|  |  |  |  |
|  |  |  |  |
|  |  |  |  |

| Revision Description | By | Date | Rev No |
|----------------------|----|------|--------|
|----------------------|----|------|--------|

|  |               |           |             |             |
|--|---------------|-----------|-------------|-------------|
| Deadman Anchor Foundation for Inner Guy<br>for Type 520B Guy Tower<br>Type 1 Soil<br>Eskom Standard Design - |               |           |             |             |
| Designed:  | Checked:      | Revision: | Date:       | Drawing No: |
| S DUDHIA   | W H COMBRINCK | Rev 0     | 04-Jun-2014 |             |



Dimensions (dashed line =NGL)



#### Bending Schedule

| Description   | Shape | Shape Code | No. Off | Dia mm | Length mm | Bend Dimensions |      |
|---------------|-------|------------|---------|--------|-----------|-----------------|------|
| Top & Front   |       | 35         | 14      | Y12    | 3250      | a               | b    |
| Bottom & Back |       | 35         | 12      | Y12    | 3250      | 3000            |      |
| Links         |       | 60         | 14      | R12    | 6150      | 788             | 2188 |

**N.B! THIS DRAWING IS AN EXAMPLE FOR QUANTITY ESTIMATES AND IS NOT TO BE USED FOR CONSTRUCTION.**

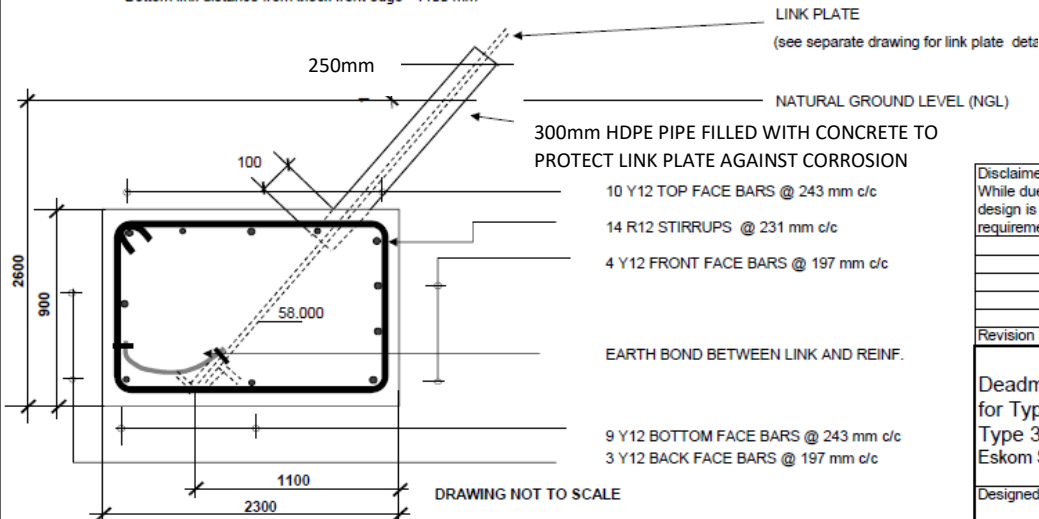
#### Pricing Parameters

| Steel Weight (kg) | Concrete Volume (m³) | Excavation volume (m³) | Excavation s. area (m²) | Link plate & cleats (kg) | Factored Design Load (kN) |
|-------------------|----------------------|------------------------|-------------------------|--------------------------|---------------------------|
| 151.46            | 6.42                 | 18.54                  | 35.21                   | 110.30                   | 616.20                    |

Quantities are based on dimensions of design drawings  
Allowances have been made for material wastage or overbreak:  
Excavation allow: 0 mm

1. Diagrams are not to scale.
2. All design data and Construction to Specification TRM5CAAC 6 (240-47172520)
3. Concrete strength: 25MPa minimum at 28 days
4. This is a single cast foundation. No construction joints are allowed.
5. Link plate to be encased in concrete with min 50mm cover

Bottom link distance from block front edge =1100 mm



#### Disclaimer:

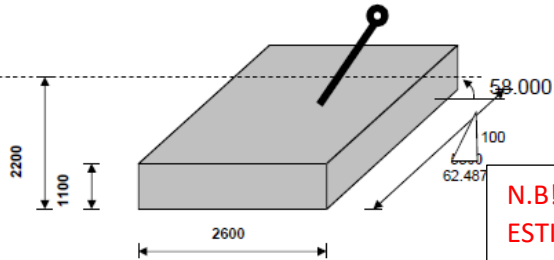
While due care has been applied in the design of this foundation, the contractor is required to verify that this design is fit for purpose considering preferred construction methodologies, geotechnical and structural requirements required at the point of application.

#### Revision Description

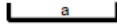
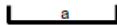
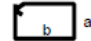
| Revision Description  | By                     | Date            | Rev No            |
|---|------------------------|-----------------|-------------------|
| Deadman Anchor Foundation for Inner Guy for Type 520B Guy Tower<br>Type 3 Soil<br>Eskom Standard Design - |                        |                 |                   |
| Designed: S DUDHIA  | Checked: W H COMBRINCK | Revision: Rev 0 | Date: 04-Jun-2014 |



Dimensions (dashed line =NGL)



#### Bending Schedule

| Description   | Shape   | Shape Code | No. Off | Dia mm | Length mm | Bend Dimensions |      |
|---------------|---|------------|---------|--------|-----------|-----------------|------|
| Top & Front   |  | 35         | 15      | Y12    | 5650      | 5400            |      |
| Bottom & Back |  | 35         | 13      | Y12    | 5650      | 5400            |      |
| Links         |  | 60         | 23      | R12    | 7150      | 988             | 2488 |

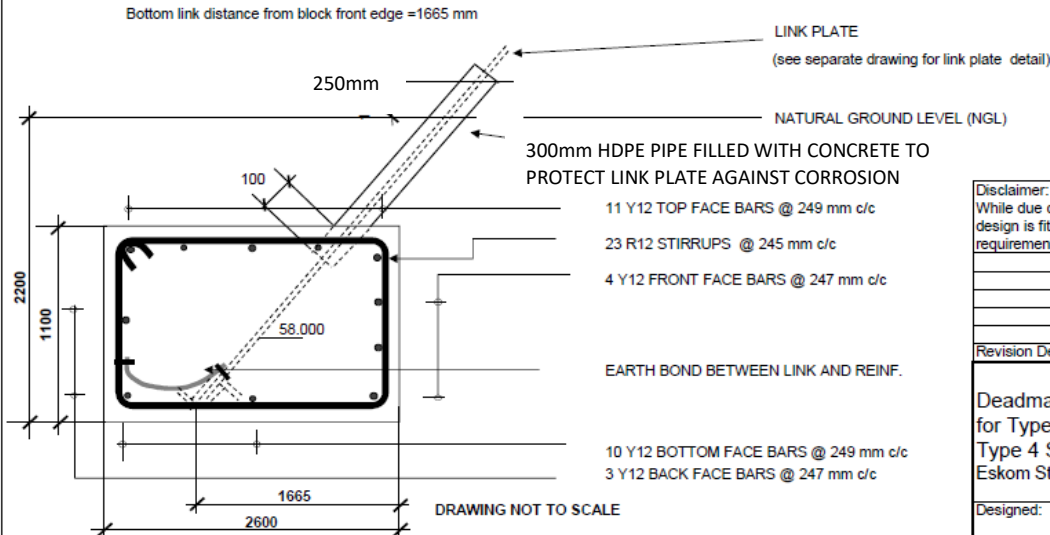
**N.B! THIS DRAWING IS AN EXAMPLE FOR QUANTITY ESTIMATES AND IS NOT TO BE USED FOR CONSTRUCTION.**

#### Pricing Parameters

| Steel Weight (kg) | Concrete Volume (m³) | Excavation volume (m³) | Excavation s. area (m²) | Link plate & cleats (kg) | Factored Design Load (kN) |
|-------------------|----------------------|------------------------|-------------------------|--------------------------|---------------------------|
| 286.45            | 15.73                | 31.46                  | 49.94                   | 96.17                    | 616.20                    |

Quantities are based on dimensions of design drawings  
Allowances have been made for material wastage or overbreak:  
Excavation sides: 0 mm  
Excavation bottom: 0 mm  
Note:

1. Diagrams are not to scale.
2. All design data and Construction to Specification TRMSCAAC 6 (240-47172520)
3. Concrete strength: 25MPa minimum at 28 days
4. This is a single cast foundation. No construction joints are allowed.
5. Link plate to be encased in concrete with min 50mm cover



#### Disclaimer:

While due care has been applied in the design of this foundation, the contractor is required to verify that this design is fit for purpose considering preferred construction methodologies, geotechnical and structural requirements required at the point of application.

| Revision Description | By | Date | Rev No |
|----------------------|----|------|--------|
|                      |    |      |        |
|                      |    |      |        |
|                      |    |      |        |
|                      |    |      |        |

Deadman Anchor Foundation for Inner Guy  
for Type 520B Guy Tower  
Type 4 Soil  
Eskom Standard Design -



|                       |                           |                    |                      |             |
|-----------------------|---------------------------|--------------------|----------------------|-------------|
| Designed:<br>S DUDHIA | Checked:<br>W H COMBRINCK | Revision:<br>Rev 0 | Date:<br>04-Jun-2014 | Drawing No: |
|-----------------------|---------------------------|--------------------|----------------------|-------------|

Diagram of a rectangular block with dimensions and a hole. The block has a width of 750, a height of 900, and a depth of 1000. A hole is located on the top surface, with a diameter of 58.000. The hole is positioned 100 units from the right edge and 62.487 units from the front edge.

| Description   | Shape   | Shape Code | No. Off | Dia mm | Length mm | Bend Dimensions |     |
|---------------|---|------------|---------|--------|-----------|-----------------|-----|
|               |   |            |         |        |           | a               | b   |
| Top & Front   |  | 35         | 8       | Y12    | 1150      | 900             |     |
| Bottom & Back |  | 35         | 6       | Y12    | 1150      | 900             |     |
| Links         |  | 60         | 5       | R12    | 3050      | 788             | 638 |

### Pricing Parameters

| Steel Weight (kg) | Concrete Volume (m <sup>3</sup> ) | Excavation volume (m <sup>3</sup> ) | Excavation s. area (m <sup>2</sup> ) | Link plate & cleats (kg) | Factored Design Load (kN) |
|-------------------|-----------------------------------|-------------------------------------|--------------------------------------|--------------------------|---------------------------|
| 27.83             | 0.68                              | 0.56                                | 3.38                                 | 42.79                    | 616.20                    |

6. Diagrams are not to scale.
7. All design data and Construction to Specification TRMSAAC 6 (240-47172520)
8. Concrete strength: 25MPa minimum at 28 days
9. This is a single cast foundation. No construction joints are allowed.
10. Link plate to be encased in concrete with min 50mm cover

While due care has been applied in the design of this foundation, the contractor is required to verify that this design is fit for purpose considering preferred construction methodologies, geotechnical and structural requirements required at the point of application.

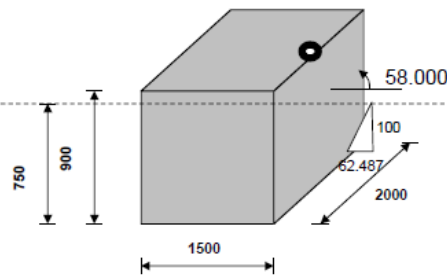
|  |    |      |        |
|--|----|------|--------|
| Requirements required at the point of application: |    |      |        |
|  |    |      |        |
|  |    |      |        |
|  |    |      |        |
|  |    |      |        |
| Revision Description                               | By | Date | Rev No |



14

Bottom link distance from block front edge = 450 mm

Dimensions (dashed line = Rock Surface Level)



**N.B! THIS DRAWING IS AN EXAMPLE FOR QUANTITY ESTIMATES AND IS NOT TO BE USED FOR CONSTRUCTION.**

#### Bending Schedule

| Description   | Shape | Shape Code | No. Off | Dia mm | Length mm | Bend Dimensions |      |
|---------------|-------|------------|---------|--------|-----------|-----------------|------|
| Top & Front   |       | 35         | 11      | Y12    | 2150      | a               | b    |
| Bottom & Back |       | 35         | 9       | Y12    | 2150      | a               | b    |
| Links         |       | 60         | 9       | R12    | 4550      | 788             | 1388 |

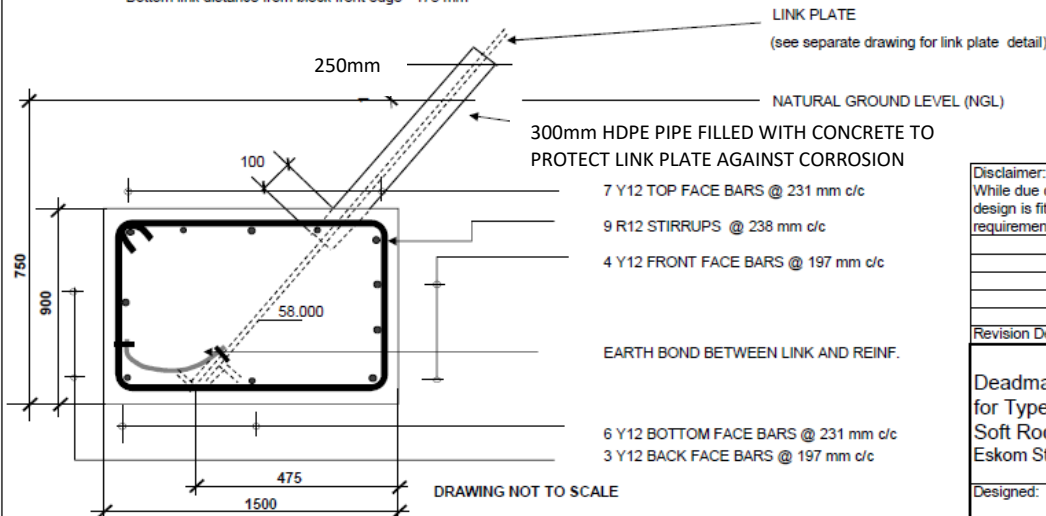
#### Pricing Parameters

| Steel Weight (kg) | Concrete Volume (m³) | Excavation volume (m³) | Excavation s. area (m²) | Link plate & cleats (kg) | Factored Design Load (kN) |
|-------------------|----------------------|------------------------|-------------------------|--------------------------|---------------------------|
| 74.53             | 2.70                 | 2.25                   | 8.25                    | 42.79                    | 616.20                    |

Quantities are based on dimensions of design drawings  
Allowances have been made for material wastage or overbreak:  
Excavation sides: 0 mm  
Excavation bottom: 0 mm  
Note:

1. Diagrams are not to scale.
2. All design data and Construction to Specification TRMCAAC 6 (240-47172520)
3. Concrete strength: 25MPa minimum at 28 days
4. This is a single cast foundation. No construction joints are allowed.
5. Link plate to be encased in concrete with min 50mm cover

Bottom link distance from block front edge =475 mm



#### Disclaimer:

While due care has been applied in the design of this foundation, the contractor is required to verify that this design is fit for purpose considering preferred construction methodologies, geotechnical and structural requirements required at the point of application.

| Revision Description | By | Date | Rev No |
|----------------------|----|------|--------|
|                      |    |      |        |
|                      |    |      |        |
|                      |    |      |        |

Deadman Anchor Foundation for Inner Guy  
for Type 520B Guy Tower  
Soft Rock  
Eskom Standard Design -



|                       |                           |                    |                      |             |
|-----------------------|---------------------------|--------------------|----------------------|-------------|
| Designed:<br>S DUDHIA | Checked:<br>W H COMBRINCK | Revision:<br>Rev 0 | Date:<br>04-Jun-2014 | Drawing No: |
|-----------------------|---------------------------|--------------------|----------------------|-------------|